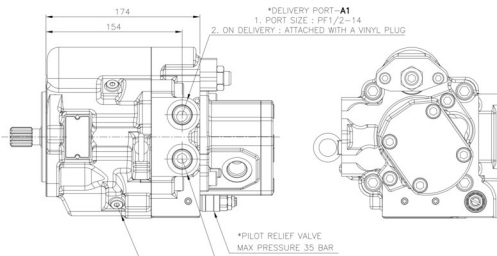
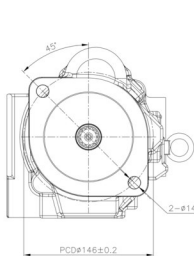
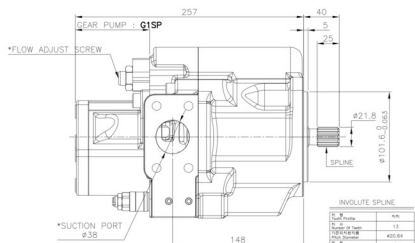
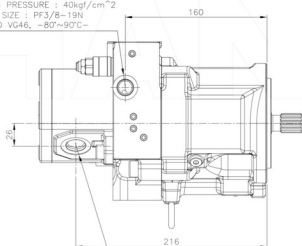


HP2D18-9/5



*TROCHOID PUMP : G2SP 5.1cc-A4

1. DISCHARGE RATE : 5.1cc/rev
2. MAX WORKING PRESSURE : 40kgf/cm²
3. PORT SIZE : PF3/8-19N
-50°C, ISO VG46, -80°-90°C-



OPERATING SPECIFICATIONS

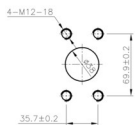
1. MAX. DISPLACEMENT

| | |
|----|---------|
| P1 | 25.5MPa |
| P2 | 25.5MPa |
| P3 | 20.5MPa |
| P4 | 3.9MPa |

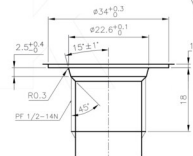
2. RATED SPEED : 2600rpm
3. MAX WORKING PRESSURE : 25.5(260)MPa(kgf/cm²)

*GEAR PUMP : G1SP 9cc-A3

1. DISCHARGE RATE : 9cc/rev
2. MAX WORKING PRESSURE : 210kgf/cm²
3. PORT SIZE : PF1/2-14N
-50°C, ISO VG46, -80°-90°C-



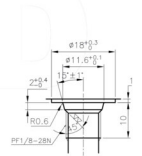
SAE 1 1/2
FOR SUCTION PORT
*SCALE : 1/1



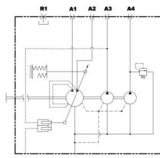
DETAIL-DELIVERY PORT A1,A2,A3
*SCALE : 4/1



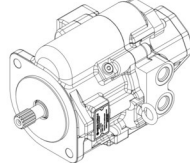
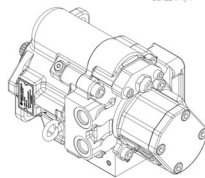
DETAIL-DELIVERY PORT A4
*SCALE : 4/1



DETAIL-AIR VENT PORT-R
*SCALE : 4/1



HYDRAULIC CIRCUIT FOR PRINCIPLE



| | | | |
|------|------|----|-----|
| REV. | DATE | BY | CHK |
| | | | |
| | | | |
| | | | |